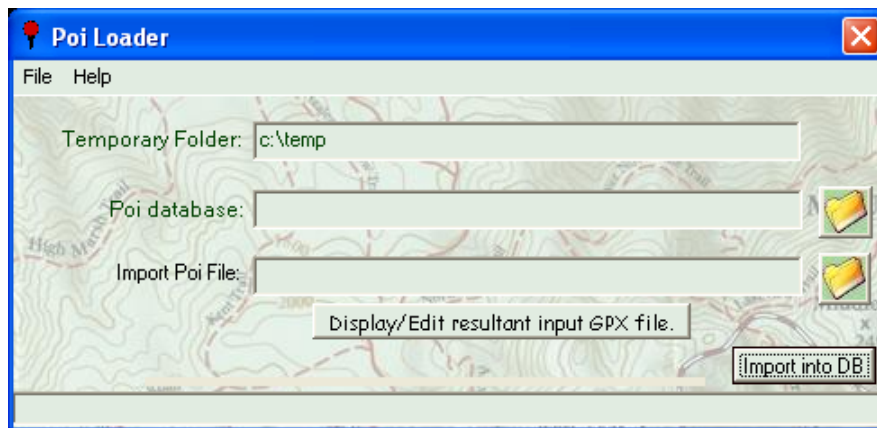


Poi Loader Instructions for use.

Poi Loader is a windows only (for now) program to load 'Points of Interest' (POI) files into the sqlite3 database used by Maemo Mapper. It is a visual basic program which uses the normal windows installation routines. You just need to download the package and unzip and run the setup.exe program.

Once unpacked and installed you will have a start menu entry 'Poi Loader'. The installation will add a folder under 'Program Files' which contains the Poi_Loader.exe, sqlite3.exe and gpsbabel.exe/gpsbabelGUI.exe along with the help files etc. the necessary dlls will be installed in Windows\system32.

Just 'click' on the 'Start menu' item and you will be presented with the following screen.



The simplest way to use this program is to leave the Temporary folder at the default 'C:\temp', 'Click' on the folder icon next to the Poi database entry field and select a database. Note:

Maemo Mapper stores its Poi information by default in a file named poi.db the path on your 770/800 (device) can be found under 'Settings' -> POI tab -> POI database. If your device is mounted as a USB drive you may select this database directly or (preferable if your confidence is low) copy the db to a folder (c:\temp ?) on your windows filesystem and select from there this will ensure that if anything goes wrong its just a copy you have trashed.

Next select the POI file you wish to load. Currently Poi_Loader will natively (with the help of gpsbabel) load 'tomtom (.ov2)', 'geocache (.loc)', gpx and 'garmin (.csv)

Note. .csv is a general standard used by numerous programs. Poi Loader will check to see if the first line of the file and assume 'unicsv' if it contains the strings "'Lat','Lon' and 'Name'" otherwise it will assume 'garmin'

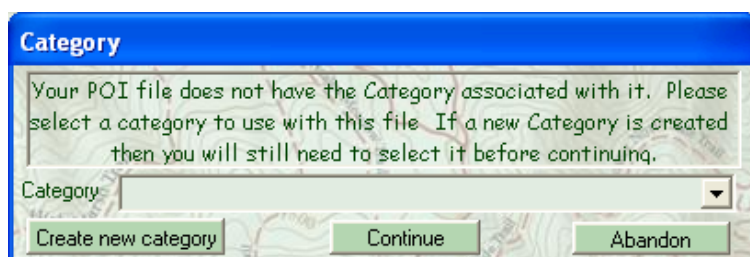
After a slight delay the poi filename will be displayed with a .gpx extension, this is the resultant gpx translated by 'gpsbabel'.

The button 'Display/Edit resultant input GPX file' will load this file using notepad.

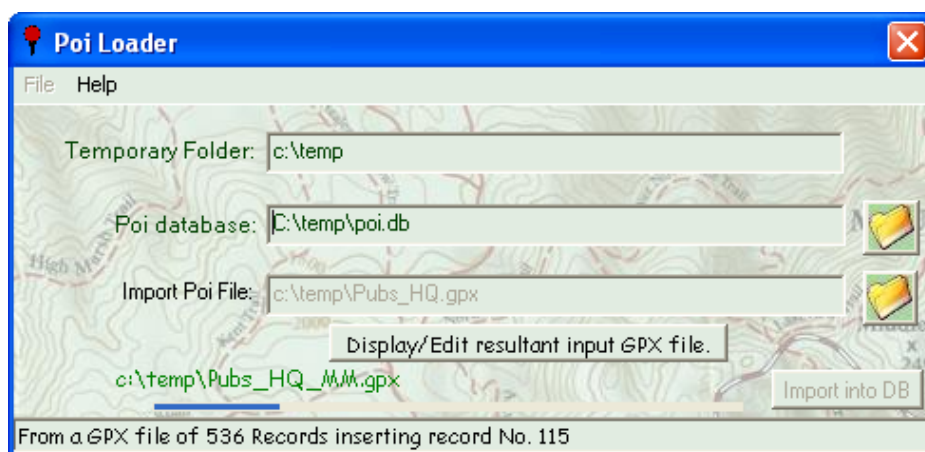
Maemo Mapper stores all 'Poi' in 'Categories'. In general any Poi files acquired from the net will not have an associated category. You will therefore need to select/assign/create a category in which to store your 'Poi' file. After Gpsbabel has translated your poi into a gpx file Poi_Loader will add <sym></sym> tags into each record. This is where the category will be stored.

Clicking 'Import into DB' will start the loading process. If this poifile is (for instance) a .ov2 the sequence of events is as follows.

A dialogue will be displayed asking you to select a category. If none of the existing selectable categories are suitable then 'Create new category' will allow you to associate a new category with this Poifile.



Once 'Continue' is clicked your Poifile will begin to load.

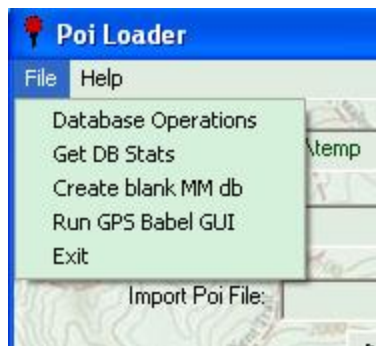


After the Poifile is loaded a messagebox will be displayed. Poi_Loader temporarily creates a unique index on the database table to avoid the possibility of loading duplicate files. If any duplicates are found you will be informed and a duplicates file will be produced in your temporary folder.



After loading a file there will be two extra .gpx files in your temp folder:- The file that gpsbabel created and a Poi_Loader native file. if for instance your poifile was Pubs.ov2 (a tomtom poifile) then there will be a Pubs.gpx (bare gpsbabel gpx file) and a Pubs_MM.gpx, this file has the category stored internally and would be loaded silently if selected above.

File menu



Database Operations

Database Operations.

Displayed 2337 records for full DB

Categories Actions --> ☐ Add New Poi ☐ Export Poi in Category to GPX ☐ Edit a category Description

Poi Actions --> ☐ Delete selected Poi ☐ Delete Poi in selected Category ☐ Export Full DB to a GPX file.

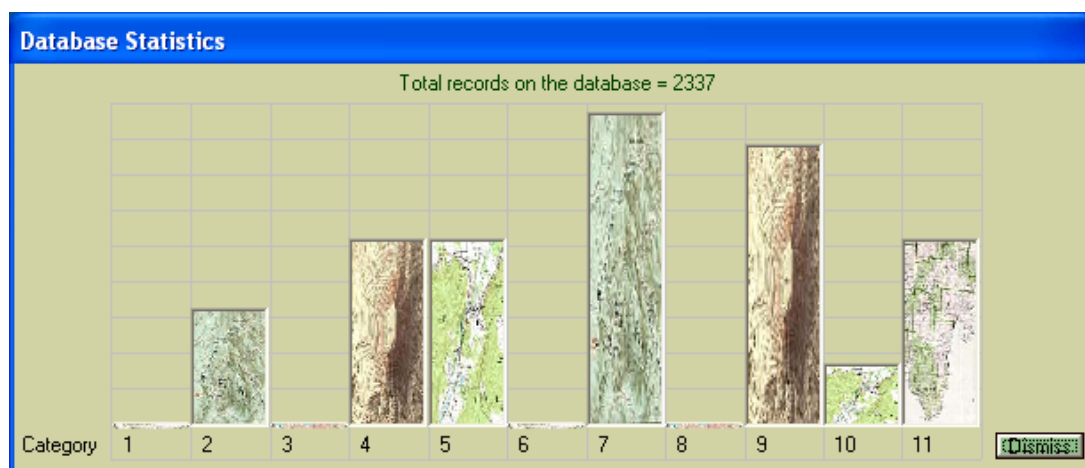
☒ Display All Poi ☐ Display Poi in selected Category

Action **Dismiss**

| | | | | |
|------|----------|----------|--|------------------|
| 1819 | 51.89047 | 0.91801 | The Rose and Crown [Colchester] | Tel 01206 866677 |
| 1820 | 52.2307 | -2.98159 | The Stag Inn [Titley] | Tel: 01544 2 |
| 1821 | 52.15887 | -2.87432 | The Salutation Inn [Weobley] | Tel 01544 31844 |
| 1822 | 52.28245 | -2.84423 | The Riverside Inn [Aymestrey] | Tel 01568 70844 |
| 1823 | 52.05013 | -2.80379 | The Ancient Camp Inn [Ruckhall] | Tel 01981 250449 |
| 1824 | 52.30671 | -2.69613 | The Roebuck Inn [Brimfield] | Tel 01584 711 |
| 1825 | 51.93436 | -2.64539 | The Lough Pool Inn [Sellack] | Tel 01989 7302 |
| 1826 | 52.1424 | -2.59205 | The Three Crowns [Bleak Acre] | Tel 01432 820279 |
| 1827 | 52.03639 | -2.42231 | The Feathers [Ledbury] | Tel 01531 635 |
| 1828 | 52.16769 | -2.28799 | The Bear and Ragged Staff [Bransford] | Tel 01886 833399 |
| 1829 | 52.05632 | -2.28363 | The Anchor Inn [Welland] | Tel 01684 5923 |
| 1830 | 51.92405 | -2.26519 | The Queens Arms [Ashleworth] | Tel 01452 700395 |
| 1831 | 52.26998 | -2.22819 | The Crowne and Sandys Arms [Ombersley] | Tel 01905 620252 |
| 1832 | 52.193 | -2.03079 | The Boot [Flyford Flavell] | Tel 01386 |
| 1833 | 52.14242 | -1.87142 | The Kings Arms [Cleeve Prior] | Tel 01789 7733 |
| 1834 | 52.09167 | -1.86543 | The Fleece Inn [Bretforton] | Tel 01386 831 |
| 1835 | 52.03587 | -1.86293 | The Broadway Hotel [Broadway] | Tel 01386 852401 |
| 1836 | 52.37919 | -3.11587 | The Red Lion [Llanfair Waterdine] | Tel 01547 52821 |
| 1837 | 52.78024 | -3.08812 | The Bradford Inn [Llanymynech] | Tel 01691 830582 |
| 1838 | 52.49441 | -2.99808 | The Castle Hotel [Bishops Castle] | Tel 01588 6384 |
| 1839 | 52.83549 | -2.81243 | The Burlton Inn [Burlton] | Tel 01939 27 |
| 1840 | 52.55251 | -2.73005 | The Royal Oak [Cardington] | Tel 01694 7712 |
| 1841 | 52.37324 | -2.72005 | The Unicorn Inn [Ludlow] | Tel 01584 873 |
| 1842 | 53.1048 | -2.71736 | The Pheasant Inn [Burwardsley] | Tel 01829 770434 |
| 1843 | 53.04976 | -2.66877 | The Cholmondeley Arms [Cholmondeley] | Tel 01829 720300 |
| 1844 | 53.11877 | -2.64578 | The Dysart Arms [Bunbury] | Tel 01829 2601 |
| 1845 | 52.56148 | -2.63661 | The Wenlock Edge Inn [Wenlock Edge] | Tel 01746 785678 |
| 1846 | 52.64054 | -2.63425 | Cholmondeley Riverside Inn [Cressage] | Tel 01952 510900 |
| 1847 | 53.07188 | -2.61784 | The Thatch [Faddiley] | Tel 01270 5 |
| 1848 | 53.02773 | -2.61252 | The Dusty Miller [Wrenbury] | Tel 01270 7805 |

TBD

Get DB Stats

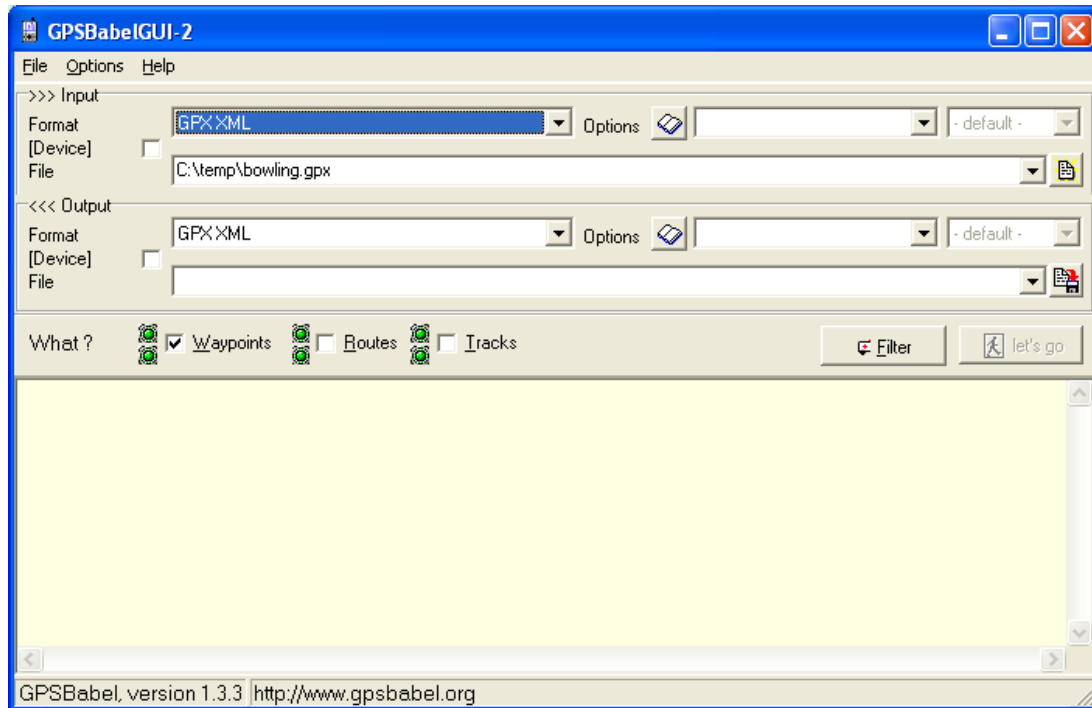


Just displays database usage in histogram format mouseover gives info on individual categories.

Create blank MM db

As it says Creates a blank db compatible with Maemo Mapper.

Run GPS Babel GUI



Again just as it says. Just runs Gpsbabel for whatever you might need it for – Radius limiting etc.